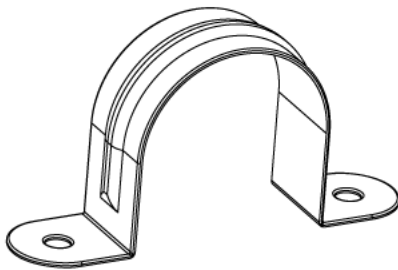
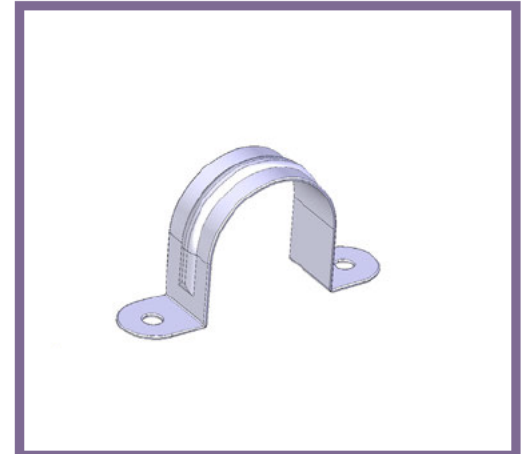


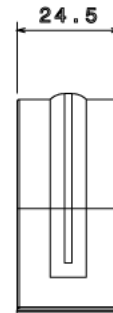


PS5 - PLAIN SADDLE

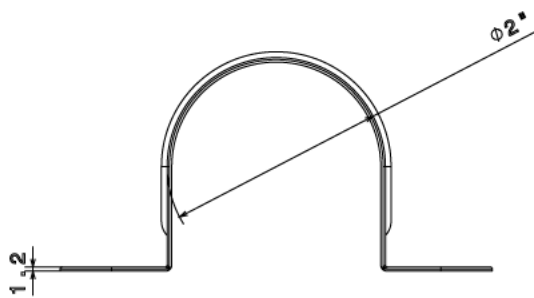
| | |
|-------------------------|--------------------------------------------------------------------------------|
| Description | PS5G / B - 2" Plain Saddle |
| Finish | BZP (G) or Black Enamel (B) |
| Material | Pressed Steel |
| Packaging | Packed in qty 50 |
| Additional Notes | Compliant to LU Standard 1-085 (For use on surface & sub-surface locations) |



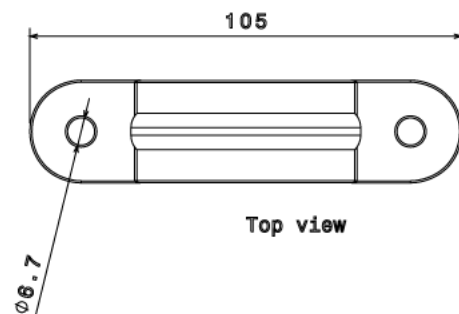
Isometric view



Side view



Front view



Top view

All measurements in mm unless otherwise stated