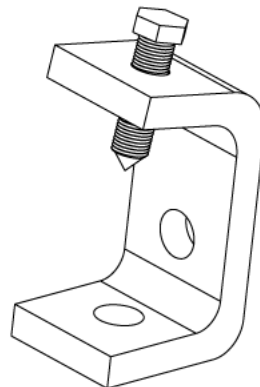
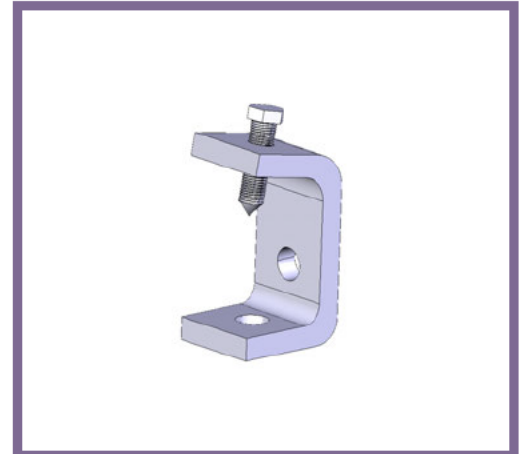


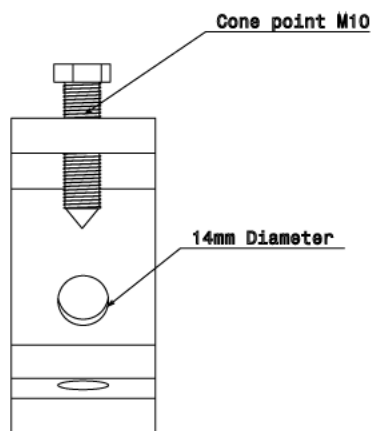


MP39 - CHANNEL BRACKET

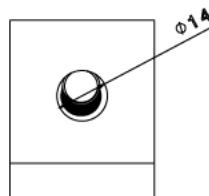
Description	MP39 - Large C Clamp c/w Cone Point
Finish	Hot Dipped Galvanised
Material	Steel
Packaging	Packed in qty 25
Additional Notes	Supplied with M10 x 40mm 8.8HT BZP Cone Point Bolt Compliant to LU Standard 1-085 (for use on surface & sub-surface locations)



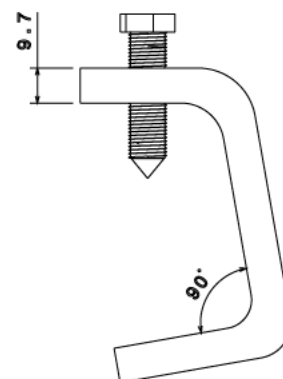
Isometric view



Front view



Bottom View



Front view

All measurements in mm unless otherwise stated