



MB16 - MALLEABLE CONDUIT BOX

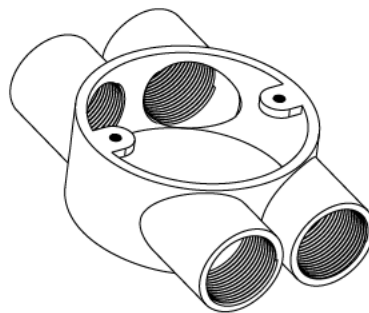
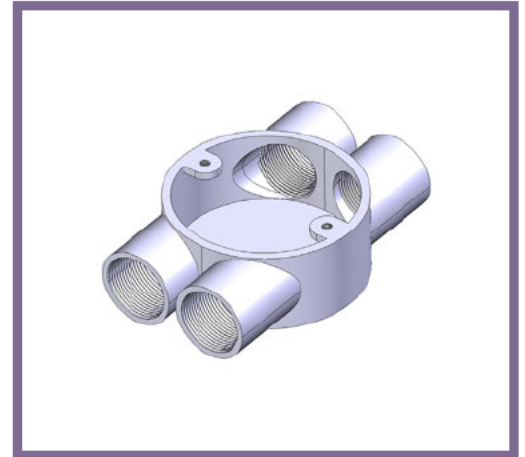
Description MB16G / B - 25mm H Malleable Conduit Box

Finish Galvanised (G) or Black Enamel (B)

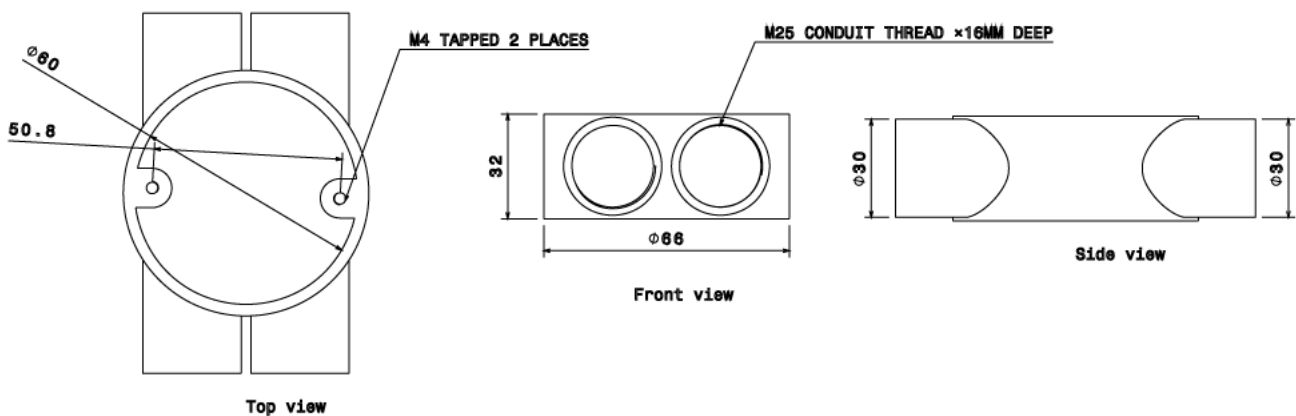
Material Malleable Iron

Packaging Packed in qty 10

Additional Notes Compliant to LU Standard 1-085
(For use on surface & sub-surface locations)



Isometric view



All measurements in mm unless otherwise stated