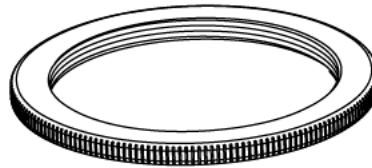
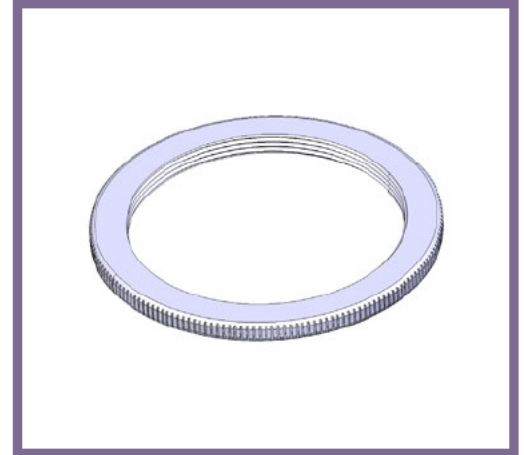


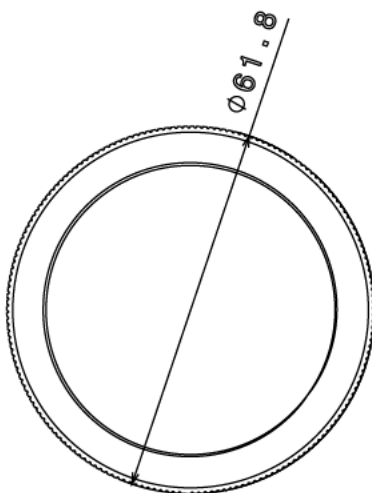


## LR5 - MILLED EDGE LOCKRING

<b>Description</b>	LR5 - 2" Milled Edge Lockring
<b>Finish</b>	BZP
<b>Material</b>	Steel
<b>Packaging</b>	Packed in qty 50
<b>Additional Notes</b>	Compliant to LU Standard 1-085 (For use on surface & sub-surface locations)



Isometric view



Top view



Side view

All measurements in mm unless otherwise stated