



## IB1 - CONDUIT INSPECTION BEND

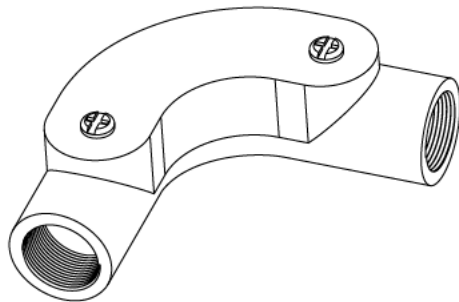
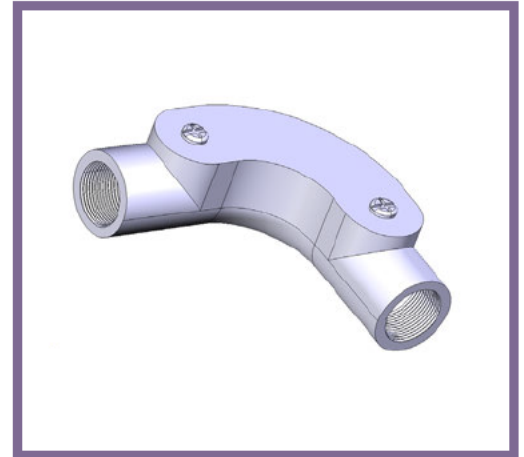
**Description** IB1G / B - 20mm Conduit Inspection Bend

**Finish** Galvanised (G) or Black Enamel (B)

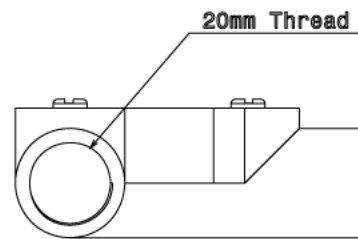
**Material** steel

**Packaging** Packed in qty 10

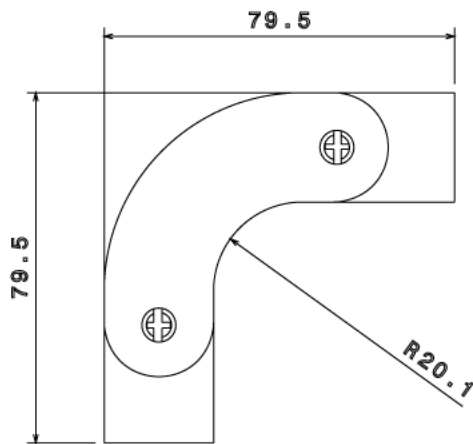
**Additional Notes** Compliant to LU Standard 1-085  
(For use on surface & sub-surface locations)



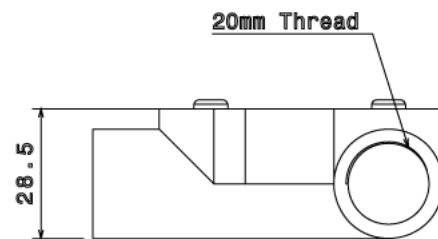
Isometric view



Right view



Top view



Left view

All measurements in mm unless otherwise stated