



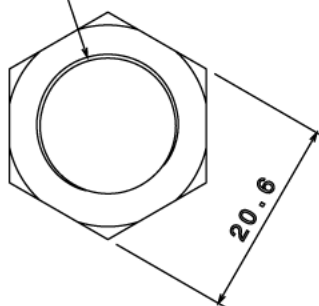
## HR1 - HEXAGON REDUCER

<b>Description</b>	HR1G / B 20 - 16mm Conduit Reducer
<b>Finish</b>	BZP (G) or Black (B)
<b>Material</b>	Mild Steel
<b>Packaging</b>	Packed in qty 50
<b>Additional Notes</b>	Compliant to LU Standard 1-085 (For use on surface & sub-surface locations)



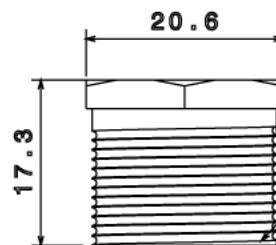
Isometric view

16mm Thread



Top view

20mm Thread



Side view

All measurements in mm unless otherwise stated