

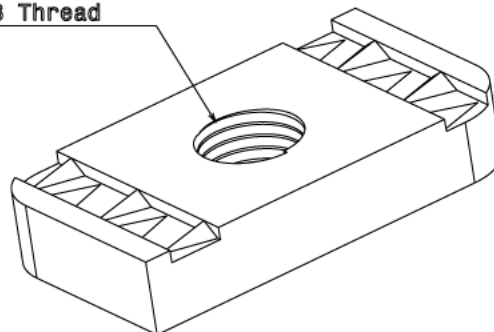


CS21/SS - CHANNEL SPRING NUT

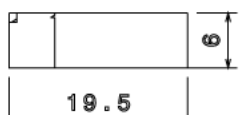
| | |
|-------------------------|--|
| Description | CS21/SS - M8 Plain Spring Nut |
| Finish | Self Colour |
| Material | Stainless Steel Grade 316 |
| Packaging | Packed in qty 100 |
| Additional Notes | For use with 21mm and 41mm Depth Channel Produced to comply with the requirements of BS6946 Metal Channel Support Systems Compliant To LU Standard 1-085 (For Use On Surface & Sub-Surface Locations) |



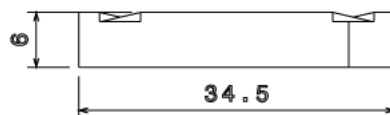
M8 Thread



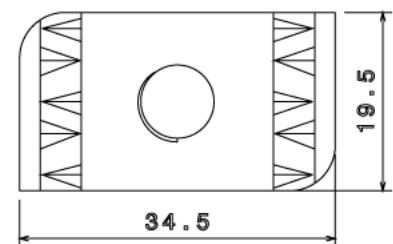
Isometric view



Front view



Side view



Top view

All measurements in mm unless otherwise stated