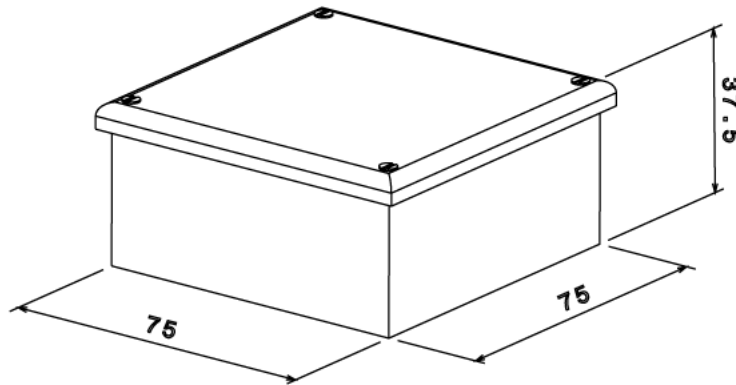
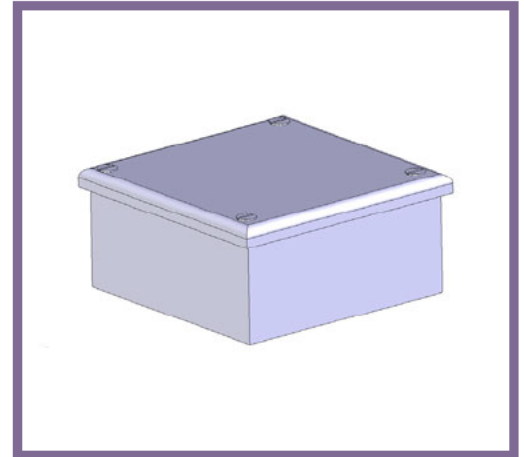


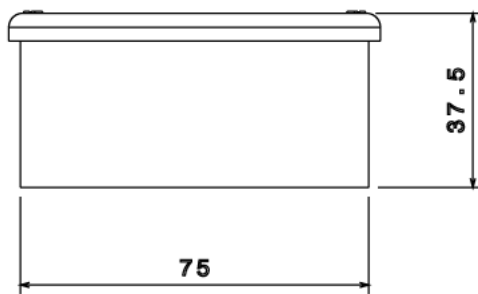


## AB01G - ADAPTABLE BOX - PLAIN

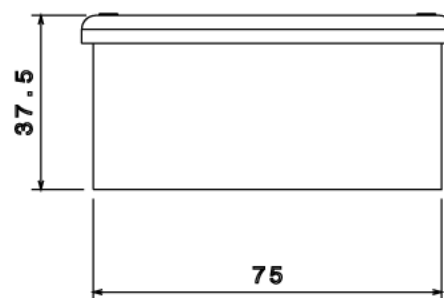
<b>Description</b>	AB01G - 75 x 75 x 37.5mm (3 x 3 x 1.5") Adaptable Box - Plain
<b>Finish</b>	Pre Galvanised Sheet Steel
<b>Material</b>	1.2mm Nominal Galvanised Steel Sheet to BS EN 50142 & 3
<b>Packaging</b>	Packed in qty 10 ( Can be purchased individually)
<b>Additional Notes</b>	Comprises of Body, Flanged Cover and 4 Lid Fixing Screws Plain sides (This product is also available with pre-cut Knockouts) Compliant To LU Standard 1-085 ( For Use On Surface & Sub-Surface Locations)



**Isometric view**



**Front view**



**Side view**

All measurements in mm unless otherwise stated